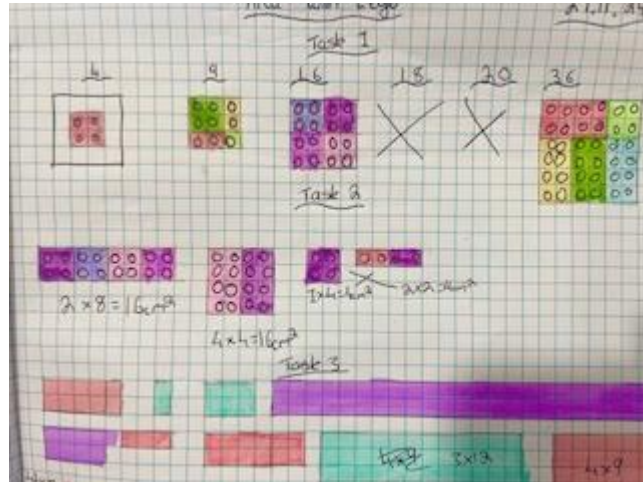
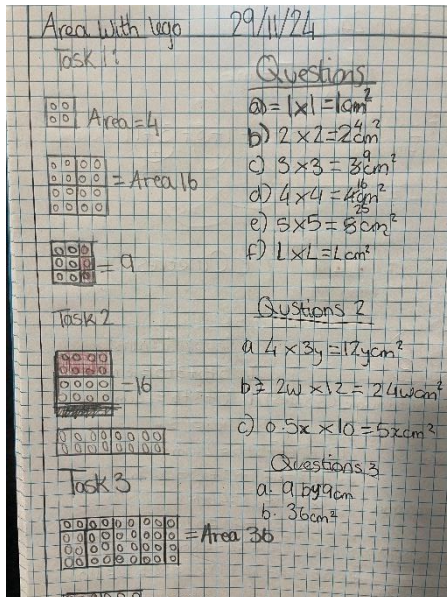


Upper 3 use Lego to investigate area



In a recent mathematics lesson Upper 3 used Lego to investigate area. Pupils worked in pairs each with the same bag of lego pieces. They were successful in their challenge to finish the following three tasks and they had a lot of fun in finding their solutions.

TASK 1 - Can you build squares with the following areas? 9, 12, 20, 16, 2, 4, 36

TASK 2 - Build a square and rectangle with the same area.

TASK 3 - Build as many different rectangles as you can with area 36cm^2 .

CHALLENGE - Build a square, rectangle, l-shape and one more different shape all with the same area.

Mrs Rebecca Pease