



GATEWAYS  
SCHOOL



# SIXTH FORM

PROSPECTUS  
2025 - 2026

# CONTENTS

Welcome	Page 03	A Level French	Page 41
Sixth Form Curriculum	Page 05	A Level Further Mathematics	Page 43
Extended Project Qualification	Page 06	A Level Geography	Page 45
A Level Art & Design	Page 09	A Level German	Page 47
A Level Art & Photography	Page 12	A Level History	Page 49
A Level Art & Textiles	Page 15	BTEC Information Technology	Page 51
A Level Biology	Page 17	A Level Mathematics	Page 53
A Level Business	Page 19	A Level Music	Page 55
BTEC Business	Page 21	A Level Philosophy	Page 58
A Level Chemistry	Page 24	A Level Physics	Page 61
A Level Classical Civilisation & Latin	Page 27	A Level Politics	Page 63
A Level Computer Science	Page 29	A Level Psychology	Page 65
A Level Drama & Theatre Studies	Page 31	A Level Sociology	Page 68
A Level Economics	Page 34	A Level Spanish	Page 71
A Level English Language	Page 37	Level 3 CTEC In Sport	Page 73
A Level English Literature	Page 39		

# WELCOME

**Thank you for your interest in becoming part of Gateways Sixth Form.**

This prospectus is designed to provide you with subject specific information about the next stage in your education. It describes the programme of study in our Sixth Form and provides information and course details about the wide range of subjects we offer at A Level.

You may already have a clear idea of the subjects you would like to study or you may be totally undecided. Please use this pack to help you to make informed choices. We can also help with subject choice through our careers system or we can arrange for you to meet with our Head of Sixth Form, Mr Jon Sharpe to discuss your options further.

The decisions you take now will undoubtedly help to shape your higher education choices and your life beyond. Therefore, do think about your strengths and play to these. It is essential that you make the best choices for you.

Of course, there is much more to life in our Sixth Form than your academic studies and we look forward to sharing that with you over the coming months – from our fantastic Sixth Form Centre to our Kickstarter package, there is a unique experience awaiting you in the Sixth Form at Gateways.

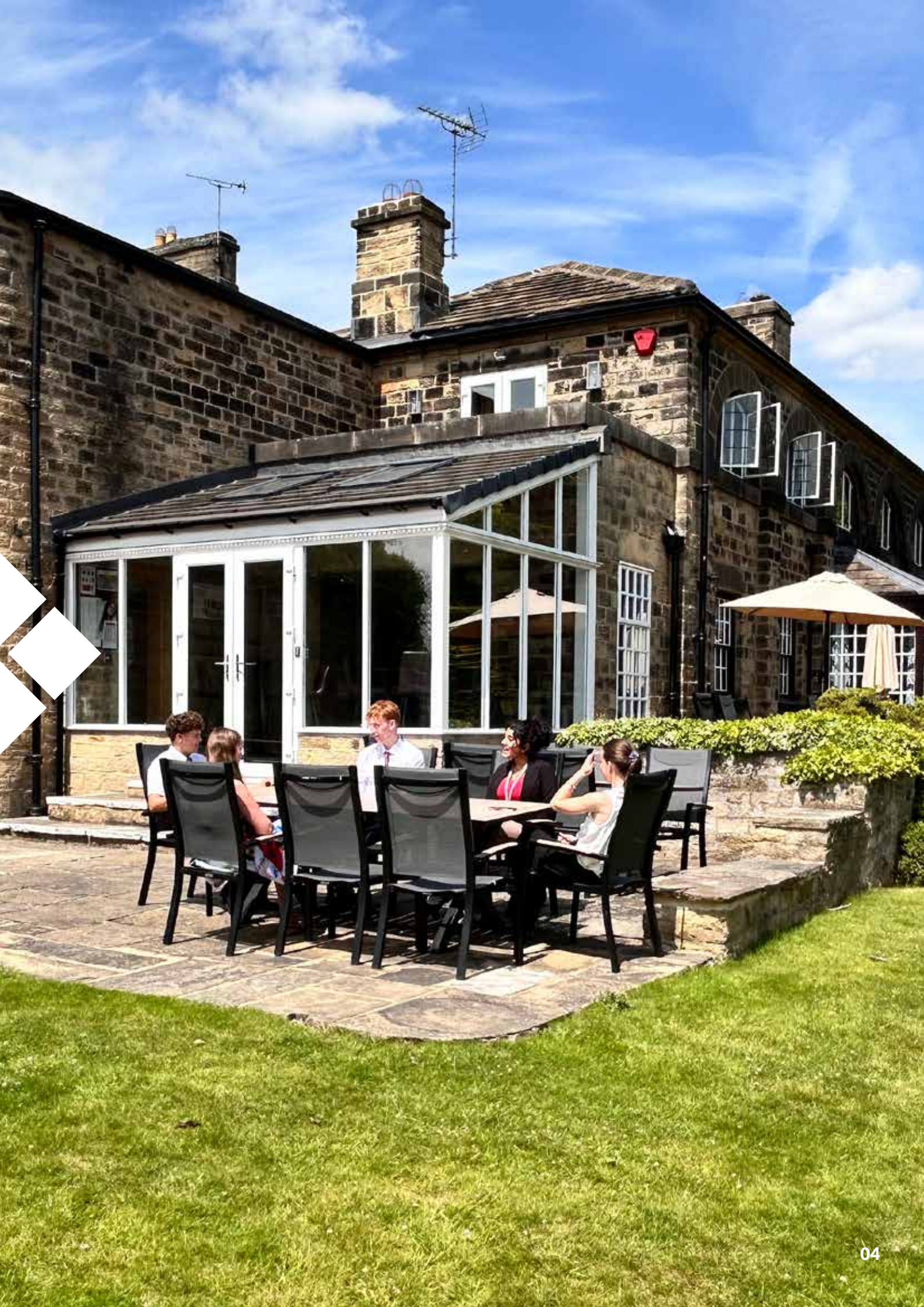
Mr Sharpe, subject teachers, other members of staff, current Sixth Formers and I are all here to assist you in your decision-making process so please do speak to us about any questions you may have.

Yours sincerely



**Dr T Johnson**  
Head









## SIXTH FORM CURRICULUM

### Gateways Sixth Form offers the following:-

#### **A CHOICE OF 3 SUBJECTS AT A LEVEL OR LEVEL 3**

Option blocks for Sixth Form subjects are published in March. These are devised from the applications received in January. We aim to offer a wide range of subjects provided there is sufficient demand.

For the most able students, we do allow the opportunity to study 4 A Level subjects provided the candidate has achieved top GCSE grades in all subjects.

Alongside the core curriculum we support students to enhance their personal development, through enrichment activities. These activities provide candidates with skills and the character required to be successful in higher education and aspirational employment. Our enrichment programme is continually evolving to meet the interests and needs of our students. As part of the enrichment programme additional qualifications can be studied including:

- **Level 3 Spoken English Award - completed in Lower 6**
  - » Candidates have to give a five-minute presentation on any subject which they find interesting or stimulating which shows evidence of broader research and uses illustrative material efficiently.
  - » They then have to select and summarise a newspaper article identifying the main issues raised by the writer and then lead a discussion with the group, the result of which they have to summarise for the examiner.
  - » Finally, they give a reading of something which they wish to recommend.
  - » They are assessed not only on the content of their presentations but on the style, clarity and accessibility of their pieces.
- **Extended Project Qualification – see page 06**
  - » This is an optional qualification which can be started after completion of the Spoken English Award.

Alongside the enrichment programme, Sixth Form participate in our extensive games programme and there are further extra-curricular activities to enrich the taught curriculum, including the provision of the Duke of Edinburgh Gold Award.

# EXTENDED PROJECT QUALIFICATION



**CONTACT:**  
Mr J Sharpe

**EMAIL:**  
[jon.sharpe@gatewaysschool.co.uk](mailto:jon.sharpe@gatewaysschool.co.uk)

**EXAMINATION BOARD:**  
AQA

**SPECIFICATION:**  
7793

## PREFERRED PREVIOUS STUDIES

GCSE entry qualifications to Gateways Sixth Form. Meeting or exceeding target grades in all other subjects.

## WHY STUDY FOR AN EPQ?

Projects are student driven qualifications, giving them the freedom and responsibility to select topics and projects they are interested in. When completing a project qualification, students follow a clearly structured process: they plan, research their topic and create a product. The product of their project can be in one of three formats:

- » a research-based written report
- » a production\* (eg charity event, fashion show, sports event etc)
- » an artefact\* (eg a piece of art, a computer game, a realized design).

\* supported by a written report.

This work is all recorded in their Production Log and finally, students deliver a presentation. During the process they develop as independent, reflective learners and acquire knowledge and transferable skills that are invaluable for further study and the workplace.

University admissions look favourably on applicants who are studying the EPQ qualification as it mirrors work undertaken on degree courses and can be a differentiator between university candidates.

This course is offered as an additional qualification and it carries UCAS points equivalent to 50% of an A Level qualification and is graded A\* to E. Students wishing to undertake an EPQ begin the course after completion of the Spoken English qualification.



# EXTENDED PROJECT QUALIFICATION

## Course Content

The topic for the project is chosen by you and agreed by a teacher, who then acts as your supervisor. You have to show that you can:

- » Plan
- » Research
- » Develop and realise your project
- » Review

To do this you must maintain an up-to-date and relevant log of how you have managed your work.

Types of product that you can create for assessment include an artefact, a theatrical production, an exhibition, a musical recital or, most commonly an extended essay based upon research (maximum 5,000 words).

You are not taught the subject content though you will be taught the following skills for assessment:

- » Project Management
- » How to effectively use resources
- » How to develop and realise your project
- » How to effectively review your work

You are assessed on the product of your project and on the process itself.







*"The purpose of Art is washing the dust of daily life off our souls."  
Pablo Picasso.*

# A LEVEL ART & DESIGN



**CONTACT:**  
Mrs D Harrison

**EMAIL:**  
[della.harrison@gatewaysschool.co.uk](mailto:della.harrison@gatewaysschool.co.uk)

**EXAMINATION BOARD:**  
AQA

**SPECIFICATION:**  
7201

## Preferred Previous Studies

It would be advantageous to have studied Art at GCSE. If you do not have any formal qualifications in Art, then you will be expected to submit a portfolio to evidence skills and interest.

## WHY STUDY ART & DESIGN?

You can develop your artistic flair when studying one of our Art, Craft and Design programmes. We offer students the opportunity to specialise in one of three disciplines: Fine Art, Textiles or Photography. Students have access to our fantastic facilities, providing the opportunity and specialist support to try out a variety of artistic techniques. Make your mark. Manipulate materials. Express yourself and create.

If you love images and colour, have recognised your creative flair and want to explore your skills within an art context, this course could be for you. You will be introduced to a variety of experiences exploring a range of fine art media, techniques and processes. You will have the opportunity to explore 2D and 3D, traditional and new technologies. This course prepares you to become an independent, confident practitioner.

Your personal work will be presented in a portfolio and can be used for progression to higher level study or training in Art and Design related occupations.

At Gateways, you are following in the footsteps of students who have recently gained places on highly sought-after courses at many of the top Art institutions in the country. Notably, students left to study on either foundation or degree level courses at The University of the Arts, Leeds College of Art, Chelsea College of Art, Edinburgh and the University of London.

As part of your course there will be opportunities for gallery visits, entering prestigious competitions, staging exhibitions, and meeting visiting practitioners.



# A LEVEL ART & DESIGN

## A Level Content

### AREAS OF STUDY

Within each component, you must demonstrate evidence that you have explored critical and contextual work through a range of two-dimensional and/or three-dimensional processes and media.

- » Component 1 Portfolio: This must include a selection of thoughtfully presented work and at least one extended project based on an idea or theme, this should demonstrate student's ability to research and develop work in meaningful ways and show evidence of working in areas of study drawn from two or more of the endorsed titles.
- » Component 2: Externally set assignment. This will consist of a choice of five questions to be used as a starting point. You are required to select one where you will demonstrate your skills in some of the following areas, drawing, painting, mixed-media, sculpture, ceramics, installation, printmaking, moving image (video, film, animation) and photography.

## A Level Assessment

### COMPONENT 1

- Personal Investigation, no time limit.
  - A structured extended response of between 1000 and 3000 words of continuous prose.
- 60% of A Level

### COMPONENT 2

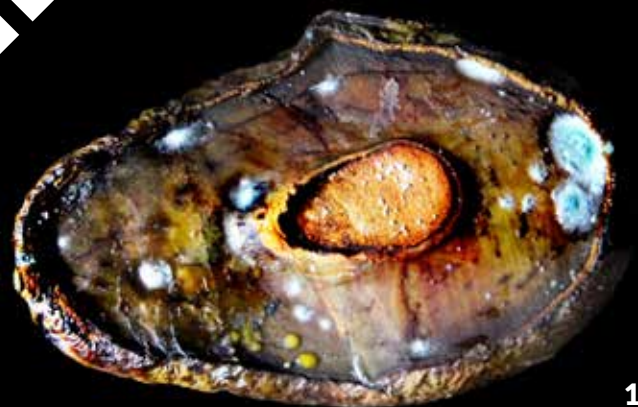
- Externally Set Assignment
  - Prep work + 15 hour supervised
- 40% of A Level





*"Despite the illusion of giving understanding, what seeing through photographs really invites is an acquisitive relation to the world that nourishes aesthetic awareness and promotes emotional detachment."*

*Susan Sontag, On Photography*





# A LEVEL ART & PHOTOGRAPHY



**CONTACT:**  
Mrs D Harrison

**EMAIL:**  
[della.harrison@gatewaysschool.co.uk](mailto:della.harrison@gatewaysschool.co.uk)

**EXAMINATION BOARD:**  
AQA

**SPECIFICATION:**  
7206

## Preferred Previous Studies

It would be advantageous to have studied Art at GCSE; A portfolio of photography will be required to demonstrate your skills and interest within the subject.

## WHY STUDY ART & PHOTOGRAPHY?

You will be introduced to a variety of experiences that explore a range of photographic media, techniques and processes. This will include both traditional and new technologies. You will explore relevant images, artefacts and resources relating to a range of art, craft and design, from the past and from recent times, including European and non-European examples. Your responses to these examples will be shown through practical and critical activities that demonstrate your understanding of different styles, genres and traditions. You may also wish to develop drawing skills in order to produce storyboards, thumbnail sketches and/or diagrams, where appropriate.

Taught alongside the art, craft and design and textiles courses, you will be taught by an art specialist who will introduce you to different resources and techniques.

Access to a DSLR Camera is vital in order to develop independent work outside of formal lesson time.

Photographic studio set up with lighting available to support photography skills. Up to date editing software is freely available across the school.



# A LEVEL ART & PHOTOGRAPHY

## A Level Content

### AREAS OF STUDY

You are required to work in one or more area(s) of photography, such as those listed below. You may explore overlapping areas and combinations of areas:

- » Portraiture, expression, chiaroscuro, gaze, identity.
- » Landscape photography (working from the urban, rural and/or coastal environment).
- » Still life photography (working from objects or from the natural world).
- » Documentary photography, photojournalism.
- » Fashion photography.
- » Experimental imagery, including raw image, Light room, Photoshop and fine art experimental effects.
- » Multimedia.
- » Photographic installation.
- » Moving image, time-lapse (video, film, animation).

### KNOWLEDGE AND UNDERSTANDING

You must show knowledge and understanding of:

- » relevant materials, processes, technologies and resources.
- » how ideas, feelings and meanings can be conveyed and interpreted in images and artefacts created in their chosen area(s) of photography.
- » historical and contemporary developments and different styles and genres.
- » how images and artefacts relate to social, environmental, cultural and/or ethical contexts, and to the time and place in which they were created.
- » continuity and change in different styles, genres and traditions relevant to photography.
- » a working vocabulary and specialist terminology that is relevant to chosen area(s) of photography.

## A Level Assessment

### COMPONENT 1

- Personal Investigation, no time limit.
  - A structured extended response of between 1000 and 3000 words of continuous prose.
- 60% of A Level

### COMPONENT 2

- Externally Set Assignment
  - Prep work + 15 hour supervised
- 40% of A Level



# A LEVEL ART & TEXTILES



**CONTACT:**  
Mrs D Harrison

**EMAIL:**  
[della.harrison@gatewaysschool.co.uk](mailto:della.harrison@gatewaysschool.co.uk)

**EXAMINATION BOARD:**  
AQA

**SPECIFICATION:**  
7204

## Preferred Previous Studies

It would be advantageous to have studied Textiles and Art at GCSE. However, no formal previous experience is necessary.

## WHY STUDY ART & TEXTILES?

If you are interested in fashion or interior design, A Level Art & Textiles allows you to experiment with a wide range of patterns, finishes and construction techniques which will help you to develop an understanding of how fascinating textiles design is and the important role it plays in life. From creating your own textiles to mastering specialist machinery and new technologies to express ideas through fabrics and finishes you will have the opportunity to produce thought provoking work with impact. You will be introduced to a variety of experiences that explore a range of textile media, processes and techniques. You will be made aware of both traditional and new media. You will explore the potential for the use of colour, explore relevant images, artefacts and resources relating to a range of art, craft and design, from the past and from recent times, including European and non-European examples. This should be integral to the investigating and making processes.

Your responses to these examples must be shown through practical and critical activities that demonstrate their understanding of different styles, genres and traditions.

Taught alongside the art, craft and design and photography courses, you will be taught by art and textiles specialists who will introduce you to different resources and techniques. The department has everything needed for you to create stunning pieces of work using everything from hand embroidery to computer-controlled embroidery; from fabric paints to dissolvable fabric.

You will be required to provide a range of fabrics and embellishments to complete your designs and will be expected to visit local haberdasheries and fabric shops. Visits to art galleries and costume departments would be advantageous.



# A LEVEL ART & TEXTILES

## A Level Content

### AREAS OF STUDY

You are required to work in one or more area(s) of textile design, such as those listed below. You may explore overlapping areas and combinations of areas:

- » Fashion design
- » Fashion textiles
- » Costume design
- » Digital textiles
- » Printed and/or dyed fabric and materials
- » Domestic textiles and wallpaper
- » Interior design
- » Constructed textiles
- » Art textiles
- » Installed textiles

### SKILLS AND TECHNIQUES

You will be expected to demonstrate skills, in the context of textile design and will be required to demonstrate skills in all of the following:

- » awareness of the elements of textile design, such as shape, line, scale, colour, texture, pattern, contrast and/or repetition in relation to the chosen area(s) of textile design.
- » awareness of intended audience or purpose for their chosen area(s) of textile design.
- » ability to respond to an issue, concept or idea, working to a brief or answering a need in the chosen area(s) of textile design.
- » appreciation of the relationship of form and function and, where applicable, the constraints of working to a brief.
- » understanding of a variety of textile methods, such as: fabric printing, mono-printing, relief printing, screen printing and laser printing; tie-dye and batik; spraying and transfer; fabric construction; stitching, appliqué, patchwork, padding, quilting and embroidery.

## A Level Assessment

### COMPONENT 1

- Personal Investigation, no time limit.
  - A structured extended response of between 1000 and 3000 words of continuous prose.
- 60% of A Level

### COMPONENT 2

- Externally Set Assignment
  - Prep work + 15 hour supervised
- 40% of A Level

# A LEVEL BIOLOGY



**CONTACT:**  
Dr S Newton

**EMAIL:**  
[sara.newton@gatewaysschool.co.uk](mailto:sara.newton@gatewaysschool.co.uk)

**EXAMINATION BOARD:**  
Edexcel

**SPECIFICATION:**  
A Level Biology B (9BIO)

## Preferred Previous Studies

GCSE Biology grade 6 or above or Double Award Science grade 7, 7 or above. GCSE Mathematics grade 6 or above.

## WHY STUDY BIOLOGY?

Biology at Gateways is taught by a highly qualified and very experienced biology specialist. Well established links with the Cancer Research laboratories allow those who wish to pursue a career in science to attend a summer internship placement working in cutting edge research and state of the art research laboratories. In addition, you will be offered the chance to enter the Prince Philip and Marsh Biology competition allowing independent research into a specific field of biology that is of interest to the you. Throughout the course you will have the opportunity to carry out fieldwork and extensive practical opportunities. Class sizes are large enough to allow valuable discussion but small enough to provide individual support.

This course provides a broad range of topics to provide a stimulating and engaging curriculum; biochemistry and molecular biology, animal and plant physiology, genetics, and microbiology. The specification combines more traditional elements, such as the kidney, with more modern biological ideas such as

epigenetics and stem cell technology. The combination of field work, visits, practical activities and discussion opportunities should allow you to find the study of biology engaging.

Practical assessment will be carried out by the completion of 16 core practical activities over the two-year course.

## CAREER OPPORTUNITIES

Studying A Level allows the development of many key skills that are actively sought after in many degree courses and careers. The organisational, analytical, processing and thinking skills are transferable to degree courses such as medicine, psychology, economics, nursing, mathematics, geography as well as the biological sciences.





# A LEVEL BIOLOGY

## A Level Content

### **BIOLOGICAL MOLECULES:**

- » You will study the chemicals of life: the organic and inorganic molecules and ions that are fundamental to the structure and physiology of living organisms.

### **CELLS VIRUSES AND REPRODUCTION OF LIVING THINGS:**

- » You will have the chance to explore how the HIV virus propagates to cause disease along with the study of prokaryotes and eukaryotes.

### **CLASSIFICATION AND BIODIVERSITY:**

- » You will explore natural selection and the formation of new species.

### **EXCHANGE AND TRANSPORT:**

- » You will study the human circulatory system as well as plant transport systems.

### **ENERGY FOR BIOLOGICAL PROCESSES:**

- » In this topic you will learn about the precise biochemistry of key processes such as respiration and photosynthesis.

### **MICROBIOLOGY AND PATHOGENS:**

- » You will study the body's response to infections along with developing the latest understanding of disease control and how diseases are spread. This topic will involve a high degree of practical work and visits to research laboratories to consolidate their understanding.

### **MODERN GENETICS:**

- » This topic builds on GCSE knowledge; you will develop knowledge of the latest techniques to understand stem cell technology; forensic applications and isolation of important genes in disease identification.

### **ORIGINS OF GENETIC VARIATION**

- » You will explore the frequency of alleles in populations and understand the inheritance of characteristics.

### **CONTROL SYSTEMS:**

- » This topic explores the homeostatic control of mammals; you will understand how drugs carry out their effects on the nervous system as well as studying the brain and its intricate functions.

### **ECOSYSTEMS:**

- » This topic will be taught mainly as fieldwork in the local area to collect meaningful data. The aim is to allow you to develop strong ecological techniques, investigate distribution of organisms and identify patterns due to environmental influences.

## A Level Assessment

### **PAPER 1 AND 2**

- Both 1 hour and 45 minutes
- Papers 1 and 2 will assess all topics taught over the 2 year course.

### **PAPER 3**

- 2 hours 30 minutes  
Questions will be of a synoptic nature and will demand a strong understanding of the core practicals.

# A LEVEL BUSINESS



**CONTACT:**  
Mrs A Farrington

**EMAIL:**  
[amy.farrington@gatewaysschool.co.uk](mailto:amy.farrington@gatewaysschool.co.uk)

**EXAMINATION BOARD:**  
AQA

**SPECIFICATION:**  
7132

## Preferred Previous Studies

A Level Business is open to everyone; it covers a lot of current affairs and so an interest in what is going on in the world is helpful. It is not necessary to have completed GCSE Business Studies, however, confidence in mathematics and writing longer essay style answers are required.

## WHY STUDY BUSINESS?

Studying Business will give students a well-developed understanding of a broad range of business topics. Most organisations have some business aspect to them. The business world is all around us and most students will have a career either working for a business or running their own. Studying business will equip young people with the skills required to be a future leader and will give them an insight into the decisions a manager must make. The use of case studies throughout the course, encourages students to put the theory into real life scenarios, developing their viewpoints and business knowledge.

In June 2024, 44,961 students took Business at A Level making it the 5th most popular subject choice nationally (JCQ).

The study of business will help you to understand how firms operate and the impact the external environment has on business activity. Students focus on the dynamic nature of the contemporary business world developing subject knowledge, analytical and evaluative skills beneficial to many career paths.

A Level Business looks at the more traditional areas of marketing and production, but also at human resources and how to find, train and retain employees. Financial data is analysed and used in decision making and students learn to analyse company accounts to calculate profit figures. Year 1 focuses on the innerworkings of a business and how the activities of the business may be improved. In year 2 we think about strategic direction and positioning - how businesses decide whether an investment is worth pursuing or how they choose which direction to follow including globalisation, innovation, and how to gain a competitive advantage.

Business also encompasses elements of economics when we look at the impact of the economy on business through inflation, GDP, exchange rates, unemployment and government policies such as protectionism.



# A LEVEL BUSINESS

## CAREER OPPORTUNITIES

A Level Business is widely accepted for entrance onto degree courses and an excellent basis for employment in many industries and occupations.

Gateways has a 100% pass rate, in A Level Business. Recent students have gone onto study fashion marketing, business management, genetics and international business as well as taking up apprenticeship opportunities.

## A Level Content

In A Level Business, you will explore the interrelated nature of Business using business models, theories and techniques to support analysis of current business issues and situations to provide a dynamic learning experience.

In year 1 deals with day-to-day businesses operations and includes the following modules:

### What is Business?

- » Managers, leadership and decision-making
- » Marketing performance
- » Operational performance
- » Financial performance
- » Human resource performance

Year 2 is concerned with how businesses make decisions to grow and develop their position in their industry and includes the following modules:

- » Analysing strategic position
- » Choosing strategic direction
- » Strategic methods
- » Managing strategic change

## A Level Assessment

All papers are equally weighted and can assess any of the content from the two years.

● PAPER 1 - 2 HOURS

● PAPER 3 - 2 HOURS

● PAPER 2 - 2 HOURS





# BTEC NATIONAL EXTENDED CERTIFICATE IN BUSINESS



**CONTACT:**  
Mrs A Farrington

**EMAIL:**  
amy.farrington@gatewaysschool.co.uk

**EXAMINATION BOARD:**  
Pearson

**SPECIFICATION:**  
BTEC Level 3 National Certificate in Business  
601/7159/5

## Preferred Previous Studies

BTEC Business is open to everyone; it covers a range of different business concepts and current affairs so an interest in what is going on in the world is helpful. It is not necessary to have completed GCSE Business Studies, however, strong independent study skills and good organisational skills will help to manage your deadlines and complete assignment work.

## WHY STUDY BUSINESS?

The BTEC National Extended Certificate is equivalent to one A level. It will prepare you to enter employment or if combined with other qualifications to progress to higher education.

BTECs embody a fundamentally learner-centred approach to the curriculum, with a flexible, unit-based structure and knowledge applied in project-based assessments. Students will develop skills that will aid them at university and in the workplace and there is a focus on students being able to apply their business knowledge to a particular business and they must demonstrate this in assignment work.

The course offers an insight into all aspects of business. You will study four units over the programme of study. The course will link theory with practical application making maximum use of your own experience. Assessment is through coursework, examination and the observation of practical activity.

This BTEC is the same as one A level and carries the equivalent UCAS points. BTEC is graded as pass, merit, distinction and distinction\*. The grades and equivalent A level grades and UCAS point scores are shown below.

<b>BTEC L3 EXTENDED CERTIFICATE</b>	<b>A LEVEL</b>	<b>UCAS TARIFF POINTS</b>
D*	A*	56
D	A	48
M	C	32



# BTEC NATIONAL EXTENDED CERTIFICATE IN BUSINESS

## CAREER OPPORTUNITIES

BTEC Business is widely accepted for entrance onto degree courses and is an excellent basis for employment in many industries and occupations. Many students go onto university to study a range of courses; it is also perfect preparation for a degree level apprenticeship.

BTEC Business can help students acquire the necessary skills to pursue higher education courses, Apprenticeships or careers in areas such as accountancy, finance, marketing, human resources and banking.

A qualification in business can help set students apart from other applicants, equip them with essential transferable skills and provide the commercial knowledge that will help prepare them for further study and future employment.

## BTEC COURSE CONTENT

You will study the fundamentals of business including exploring business purposes, developing a marketing campaign, business finance and recruitment.

The BTEC qualification is assessed through a mixture of coursework and exams. There will be one examination in each year.

Over the course of two years, students will complete four units. These will consist of two assignment units and two external examinations. The final grade is a combination of how students have achieved across all four units.

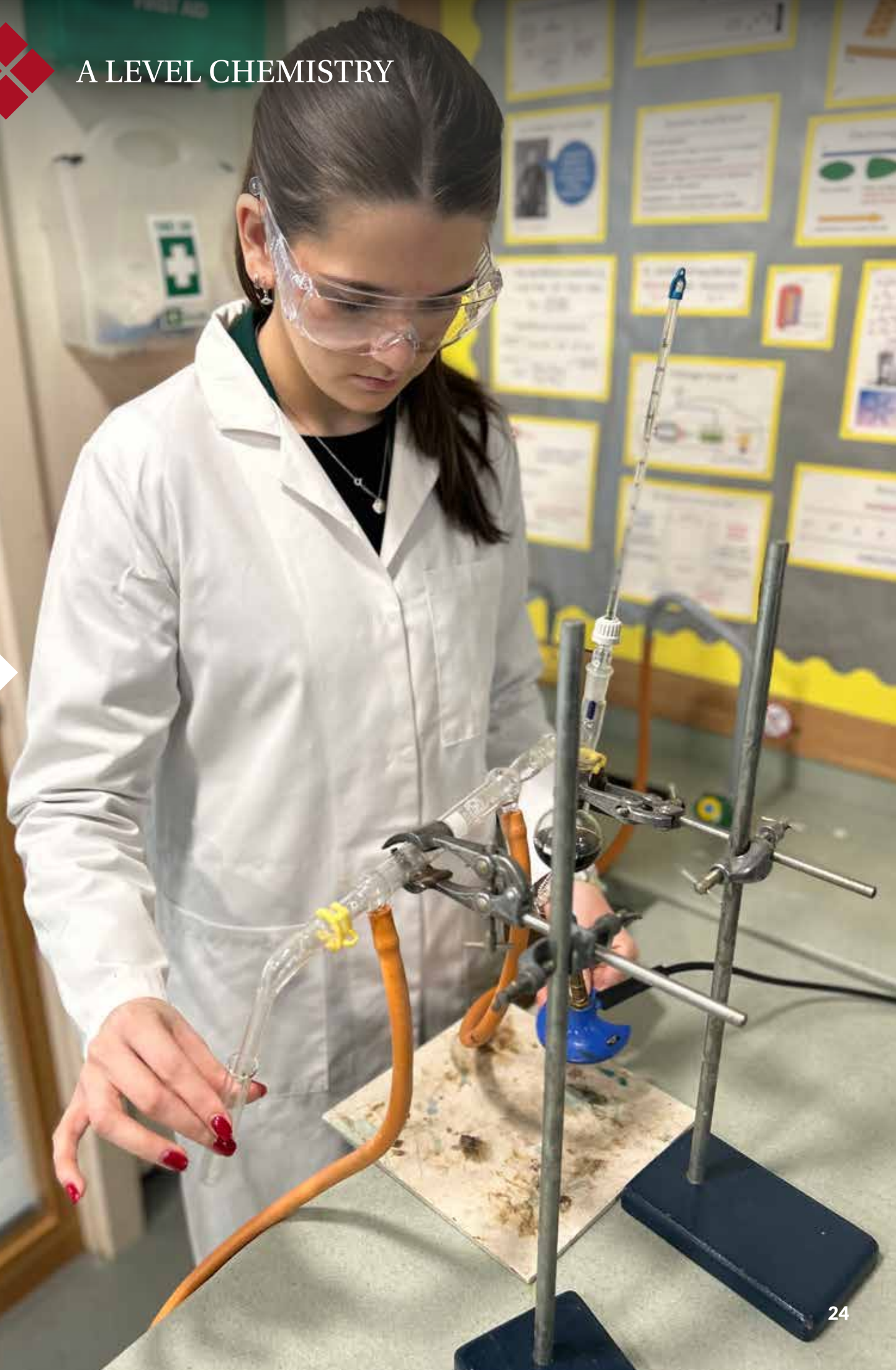
## BTEC Assessment

- Unit 1 - Exploring business. This unit is assignment based and internally assessed. Managers, leadership and decision-making.
- Unit 2 - Developing a marketing campaign and is externally assessed in the form a 3 hour, computer based examination.
- Unit 3 - Personal and business finance. This is externally assessed through a written examination. Financial performance.
- Unit 8 - Recruitment and selection. This is an assignment and internally assessed.





# A LEVEL CHEMISTRY



# A LEVEL CHEMISTRY



**CONTACT:**  
Mrs S King & Mr A Bahcaci

**EMAIL:**  
[sophie.king@gatewaysschool.co.uk](mailto:sophie.king@gatewaysschool.co.uk)  
[ali.bahcaci@gatewaysschool.co.uk](mailto:ali.bahcaci@gatewaysschool.co.uk)

**EXAMINATION BOARD:**  
AQA

**SPECIFICATION:**  
7405

## Preferred Previous Studies

To be successful in A Level Chemistry, ideally you should achieve a grade 7 or above in GCSE Chemistry or 7-7 or above in the Double Award Science. In addition you should achieve grade 7 or above in GCSE Mathematics.

## WHY STUDY CHEMISTRY?

This exciting subject builds upon the knowledge gained at GCSE but goes much further revealing the understanding behind the concepts. It asks questions about materials, how they react, how they are made and how energy change drives all processes. By taking chemistry you develop useful skills that can be applied outside of the subject; these include problem solving, numeracy, practical and analytical skills as well as developing a broad scientific background. As a result, it is a highly respected and useful qualification for higher education and employment in a wide range of areas.

Chemistry is often seen as the 'central science' supporting physics and biology. However, it can also be taken as a standalone A Level course.

Studying at Gateways means you will be taught by highly qualified and experienced chemistry specialists. The laboratories are well equipped and the small class sizes allow you to have individual hands-on practical experience.

Studying chemistry allows you to develop subject-specific and transferable skills which are valued by all employers, meaning your future career does not have to be in a laboratory. It is a very desirable and highly respected qualification.

## CAREER OPPORTUNITIES

A Level Chemistry is not only essential for many science-based courses such as medicine, veterinary science, dentistry, biosciences, genetics, pharmacy, biochemistry and environmental sciences but also is a valid entry qualification for courses such as food technologies, law, mathematics and computing.



# A LEVEL CHEMISTRY

## A Level Content

### YEAR 1 CONTENT

#### Physical Chemistry

- » Atomic structure
- » Amount of substance
- » Bonding
- » Energetics
- » Kinetics
- » Equilibria
- » Redox

#### Inorganic Chemistry

- » Periodicity
- » Group 2 the alkaline earth metals
- » Group 7 the halogens

#### Organic Chemistry

- » Introduction to organic chemistry
- » Alkanes
- » Halogenoalkanes
- » Alkenes
- » Alcohols
- » Organic analysis

### YEAR 2 CONTENT

#### Physical Chemistry

- » Thermodynamics
- » Rate equations
- » Equilibrium constant ( $K_p$ )
- » Electrode potentials
- » Electrochemical cells
- » Acids and bases

#### Inorganic Chemistry

- » Properties of Period 3 elements and their oxides
- » Transition metals
- » Reactions of ions in aqueous solution

#### Organic Chemistry

- » Optical isomerism
- » Aldehydes and ketones
- » Carboxylic acids and derivatives
- » Aromatic chemistry
- » Amines
- » Polymers
- » Amino acids, proteins and DNA
- » Organic synthesis
- » NMR spectroscopy
- » Chromatography

## A Level Assessment

Assessment is through three 2 hour examinations comprising multiple choice, short answer, context-based response and essay questions.

### PAPER 1

- 2 hours, 35% of qualification
- Relevant physical chemistry and inorganic chemistry

### PAPER 2

- 2 hours, 35% of qualification
- Relevant physical chemistry and inorganic chemistry

### PAPER 3

- 2 hours, 30% of qualification
- All content and practical skills



# A LEVEL CLASSICAL CIVILISATION & LATIN



**CONTACT:**  
Mr J Crosby

**EMAIL:**  
[josh.crosby@gatewaysschool.co.uk](mailto:josh.crosby@gatewaysschool.co.uk)

**EXAMINATION BOARD:**  
OCR

## Preferred Previous Studies

You do not need to have studied Classical Civilisation at GCSE to take it at A Level. If you wish to study Latin A Level, GCSE Latin at grade 6 or above is required.

## WHY STUDY CLASSICS?

Classics is the study of the ancient Greek and Roman civilisations. The subject allows you to understand and appreciate the modern world by exploring its antecedents. The department aims to encourage your interest in and enthusiasm for the ancient world. Combining, as it does, many aspects of different humanities fields, Classics includes elements of language, art, drama, literature, history and archaeology.

Consequently, the subject develops a wealth of skills, such as linguistics, textual criticism, historical method, communication, developing arguments and lateral thinking. In short, Classics has something for all. There are three distinct A Levels to choose from: Latin, Classical Civilisation and Ancient History.

The aims of these Classics specifications are to encourage an interest in, and enthusiasm for, the classical world; acquire, through studying a range of appropriate sources, knowledge and understanding of selected aspects of classical civilisation. The classical world

had much influence on later times, and we study the similarities and differences between the classical world and later times. In addition, the Latin option aims to encourage an appropriate level of competence in the language studied and a sensitive and analytical approach to language generally.

## CAREER OPPORTUNITIES

Studying Classics demonstrates a love of history but also an interest in how society has developed and is organised. Popular career paths focus on law and communications, examples of which are barrister, chartered accountant, civil service fast streamer, editorial assistant, heritage manager, museum/gallery curator, newspaper journalist, solicitor.



# A LEVEL CLASSICAL CIVILISATION & LATIN

## A Level Content

### LATIN

You must take the following options (although there is some choice in terms of set texts):

- » Latin Language (translation and prose composition); students will become particularly familiar with the styles of Livy and Ovid
- » Latin Verse Literature (Virgil, Tibullus, Lucretius and Ovid)
- » Latin Prose Literature (options include texts by Cicero, Nepos, Tacitus and Apuleius)

### CLASSICAL CIVILISATION

Our modules include:

- » Homer's Iliad
- » Virgil's Aeneid
- » Greek Theatre (including both tragic and comedic plays)
- » Politics of the late Roman Republic

## A Level Assessment

### LATIN

- 2x 2 hour papers
- 1x 1 hour and 15 minutes paper
- 1x 1 hour and 45 minutes paper

### CLASSICAL CIVILISATION

- 2x 2 hour and 30 minutes papers

# A LEVEL COMPUTER SCIENCE



**CONTACT:**  
Mrs A Holmes

**EMAIL:**  
alex.holmes@gatewaysschool.co.uk

**EXAMINATION BOARD:**  
OCR

**SPECIFICATION:**  
H446

## Preferred Previous Studies

A grade 7 in GCSE Computer Science is preferred as the A Level content expands on the GCSE course. Grade 6 in GCSE Maths would also be preferential; computer science is built on mathematics and this is tested further throughout the course.

## WHY STUDY COMPUTER SCIENCE?

Computer Science and IT are an exciting field that continues to grow each year with organisations throughout the world becoming more heavily reliant on the systems that control our lives. Being able to thrive in a world where you understand these systems opens up a variety of roles. There is a high demand for lucrative and diverse career opportunities with unmatched demand for computer science professionals. The critical and problem-solving skills nurtured and built on in the early years sharpens analytical thinking skills through complex problem solving, especially through the coursework element of the course and equips students with skills applicable across various domains.

The first two units focus on the theory and some application of the subject ranging from networking, moral and ethical dilemmas to individual algorithms and their mechanics.

The coursework alone provides students with a solid foundation for understanding the requirements for university level coursework. This gives them the

opportunity to create a self-programmed and documented project that encompasses the theory as well as the practical elements of the subject. The project provides students a real-world coding experience of what a team would ordinarily complete in a company giving them a huge sense of fulfilment and understanding for multiple areas of the subject. Students in the past have coded platform games, online storage facilities, browsers, conversion calculators and quiz games to help test themselves on the course content.

## CAREER OPPORTUNITIES

- Software development
- Data scientist
- Cyber security analyst
- Data analyst
- Website development
- IT consultant
- Games developer
- Forensic computer analyst
- Network engineer
- Software product manager
- Business analyst
- Cryptocurrency programming



# A LEVEL COMPUTER SCIENCE

## A Level Content

### COURSE CONTENT

Unit 1 – Computer Systems - the characteristics of contemporary processors, input, output and storage devices

- » Software and software development
- » Exchanging data
- » Data types, data structures and algorithms
- » Legal, moral, cultural and ethical issues

Unit 2 – Algorithms and Programming

- » Elements of computational thinking
- » Problem solving and programming
- » Algorithms to solve problems and standard algorithms

Unit 3 – NEA Programming Project

- » 9-month self-lead programming project comparable to a final year Computer Science dissertation

## A Level Assessment

### UNIT 1

- Written exam - Computer Systems  
40% of A Level, 2 ½ hours

### UNIT 2

- Written exam - Algorithms and Programming  
40% of A Level, 2 ½ hours

### UNIT 3

- Coursework - NEA Programming Project  
20% of A Level





# A LEVEL DRAMA & THEATRE STUDIES



**CONTACT:**  
Mrs G Hamlyn

**EMAIL:**  
[gemma.hamlyn@gatewaysschool.co.uk](mailto:gemma.hamlyn@gatewaysschool.co.uk)

**EXAMINATION BOARD:**  
Eduqas

## Preferred Previous Studies

GCSE Drama at grade 5 or above. Participation in performance arts either at school or with external organisations.

## WHY STUDY DRAMA?

Drama and Theatre Studies is a well-established subject recognised for its academic rigour by all the major universities including Oxford and Cambridge. It combines theoretical and practical work and involves studying the history of theatre, key playwrights and practitioners, analysis of live theatre performances and the performance of your own practical work. The course provides you with the opportunity to pursue individual interests, such as acting, set or costume design, as well as encouraging critical thinking, communication skills, initiative and teamwork.

At Gateways, Sixth Form drama students benefit from a high staff-to-student ratio; allowing more personal teacher direction. Gateways has a state-of-the-art performing arts centre that is versatile and conducive to high quality performance work. It provides an excellent venue for in-house productions as well as touring drama companies, such as the Reduced Shakespeare Company.

Exposure to a whole range of performances is vital to your development, so regular theatre trips are organised.

## CAREER OPPORTUNITIES

Drama and Theatre Studies will encourage you to present yourself in a confident, articulate manner; an essential skill in any career. Teamwork and individual initiative are also key areas developed by the course. This course can lead to careers in the theatre, such as performance, stage management and arts administration. However, in combination with other subjects, it can also lead to a much broader range of careers, from law to teaching. A visitor to the school during enterprise week stressed the importance of creativity in the modern business world and the ability to communicate ideas – these skills are at the core of this course.



# A LEVEL DRAMA & THEATRE STUDIES

## A Level Content

### COMPONENT 1: THEATRE WORKSHOP (20%)

- » Participate in the creation, development and performance of a piece of theatre based on a reinterpretation of an extract from a chosen text.
- » The piece must be developed using the techniques and working methods of either an influential theatre practitioner or a recognised theatre company.
- » Learners must produce: a realisation of the performance or design and a creative log.

### COMPONENT 2: TEXT IN ACTION (40%)

- » A performance, participate in the creation, development and performance of two pieces of theatre based on a stimulus.
- » A devised piece using the techniques and working methods of either an influential theatre practitioner or a recognised theatre company.
- » An extract from a text in a different style chosen by the learner.

### COMPONENT 3: TEXT IN PERFORMANCE (40%)

#### Section A & B:

- » Open book: Clean copies (no annotation) of the two complete texts chosen must be taken into the examination.
- » Two questions, based on two different texts, one written pre-1956 and one written post-1956.
- » Centre choice of 10 performance texts .

#### Section C:

- » Closed book: A question based on a specified extract from: The Book of Dust – La Belle Sauvage, Philip Pullman, adapted by Bryony Lavery (Nick Hearn).

## A Level Assessment

### COMPONENT 1

Non exam assessment: internally assessed, externally moderated.

- 20% of the qualification

### COMPONENT 2

- Script/design realisation
- Devised performance/design realisation
- 40% of the qualification

### COMPONENT 3

- Written examination: 2 hours 30 minutes
- 40% of the qualification





# A LEVEL ECONOMICS



**CONTACT:**  
Mrs A Farrington

**EMAIL:**  
[amy.farrington@gatewaysschool.co.uk](mailto:amy.farrington@gatewaysschool.co.uk)

**EXAMINATION BOARD:**  
Edexcel

**SPECIFICATION:**  
A Level Economics B

## Preferred Previous Studies

While there are no specific subjects required, students who have previously studied Business, Mathematics, or Geography often find some overlap. Strong numeracy and essay writing skills are helpful, as the course involves data analysis and constructing arguments.

## WHY STUDY ECONOMICS?

Studying A Level Economics helps you understand how individuals, businesses, and governments make decisions about scarce resources, while also giving insight into real-world issues like inflation, unemployment, and global trade. It develops highly transferable skills such as analytical thinking, data interpretation, essay writing and problem-solving, which are respected by universities and employers alike.

Studying economics also keeps your future options open as it combines elements of maths, politics and business, and can lead to a wide range of degrees and careers in areas like finance, law, government, and international relations. Beyond academics and careers, it makes you more informed about everyday life, from understanding taxes and interest rates to following current events and debates. The Edexcel B course is particularly useful because it applies economic theories to real-life business contexts, making it highly relevant and engaging.

## CAREER OPPORTUNITIES

Studying economics can lead to careers in:

- Banking and Finance (e.g., financial analyst, investment banker)
- Government and Policy (e.g., economist, civil service)
- Business and Management (e.g., consultant, business strategist)
- International Relations (e.g., working with the UN, NGOs, global think tanks)
- Journalism (especially financial or political reporting)
- Many students go on to study Economics, PPE, Business, or Finance at university.



# A LEVEL ECONOMICS

## A Level Content

### THEME 1: MARKETS, CONSUMERS AND FIRMS

- » How businesses meet customer needs
- » Market research and demand
- » Price determination
- » The role of branding and marketing

### THEME 2: THE WIDER ECONOMIC ENVIRONMENT

- » Economic indicators
- » Globalisation
- » Government policy impacts on business
- » Economic growth and unemployment

### THEME 3: THE GLOBAL ECONOMY

- » International trade and exchange rates
- » Emerging markets
- » Multinational corporations
- » Global competitiveness

### THEME 4: MAKING MARKETS WORK

- » Market failure and government intervention
- » Competition policy
- » Behavioural economics
- » The labour market

## A Level Assessment

Edexcel A Level Economics B is assessed entirely through three exams at the end of Year 13, with no coursework. Each paper is two hours long, worth 100 marks, and makes up a third of the final grade.

Paper 1 focuses on microeconomics, testing knowledge of markets, competition, consumer behaviour, and government intervention; Paper 2 covers macroeconomics, including topics such as economic growth, unemployment, inflation, trade, and globalization; Paper 3 is synoptic, combining micro and macro by looking at the wider economic environment, business behaviour, and policy impacts.

All exams use a mixture of multiple-choice, short answers, data response and essay-style questions, requiring students to apply theory to real-world case studies and demonstrate strong analysis and evaluation skills.



# A LEVEL ENGLISH LANGUAGE



**CONTACT:**  
Mrs M Burns

**EMAIL:**  
[marae.burns@gatewaysschool.co.uk](mailto:marae.burns@gatewaysschool.co.uk)

**EXAMINATION BOARD:**  
AQA

**SPECIFICATION:**  
7702

## Preferred Previous Studies

GCSE English Language and English Literature. Grade 6 is advantageous in both subjects.

## WHY STUDY ENGLISH LANGUAGE?

Language is what distinguishes us from other animals and indeed, other human beings. An understanding of the nature of the English language, its functions and effects should be part of the general knowledge we have about ourselves and the world in which we live. This course in English Language provides a challenging approach to the study of English. The course can be both scientific and/or social in its approach and contexts. You will be provided with a wide range of texts to enable you to study what language is, how language works and what language reveals about us as human beings. This specification will encourage you to develop your interest in and appreciation of English, through learning about its structures and its functions, its developments and its variations in use. It also encompasses new concepts such as the study of the spoken word. It will encourage you to develop your ability to express yourself in speech and writing, producing texts for different audiences, purposes and in different genres with greater competence and sophistication, whilst examining your choices as a writer.

## CAREER OPPORTUNITIES

English Language complements any other combination of subjects you might study at A Level and although it is an Arts subject, many of its approaches are empirical and it can be scientific. In the outside world, the study of language and linguistics happily teams up with biology, psychology, philosophy, sociology and computer science, as well as foreign languages and English literature courses. A Level English Language will provide you with a good basis for all professions and careers, particularly those involving people and communications. Having a good command of English and a clear written style is essential for all careers and is particularly relevant for those of you wishing to study law, business, journalism courses and media/communications courses. The analytical content of the course is particularly useful for law students.



## A LEVEL ENGLISH LANGUAGE

A Level English Language is highly valued by employers because it develops the following transferable skills, which are so crucial for advancement in the modern workplace:

- » The ability to explore and understand spoken and written language in use.
- » The ability to understand the roles of purposes, audiences and contexts and the impact of these.
- » The ability to understand the pressures on language production and reception of your own writing as well as that produced by others.
- » The ability to use linguistic methods to analyse and investigate texts from everyday sources.

### A Level Content

- » Textual Variations and Representations
- » Children's Language Development
- » Language Diversity and Change
- » Language Discourses
- » Writing skills
- » Language Investigation
- » Original Writing

### A Level Assessment

#### **PAPER 1: 2 HOURS 30 MINS**

- Language, the Individual and Society written paper 40%

#### **PAPER 1: 2 HOURS 30 MINS**

- Language Diversity and Change written paper 40%

#### **NON-EXAM ASSESSMENT 20%**

- Investigation - 50%
- Original Writing and Commentary - 50%

# A LEVEL ENGLISH LITERATURE



**CONTACT:**  
Mrs M Burns

**EMAIL:**  
[marae.burns@gatewaysschool.co.uk](mailto:marae.burns@gatewaysschool.co.uk)

**EXAMINATION BOARD:**  
AQA

**SPECIFICATION:**  
7712B

## Preferred Previous Studies

GCSE English Language and English Literature. Grade 6 is advantageous in both subjects.

## WHY STUDY ENGLISH LITERATURE?

English Literature prepares us for life. The wide range of texts allows you to reflect on the human condition and encourages an appreciation and awareness of the nuances of language. This subject is intellectually and emotionally stimulating, and is held in high esteem by all universities. This course will encourage you to take greater responsibility for your own learning and will give you a strong grounding in the academic principles relating to working with texts. The detailed analysis work will give you an academic focus and develops your attention to detail whilst the discussion/seminar-style of teaching and learning will give you an arena for debate and substantiation so as to develop your academic confidence. The course encourages students to develop their interest in, appreciation of and interpretation of English literature, through learning about the ways in which literature can be seen as consisting of possible groups of texts which can be categorised, and whose meaning can be negotiated in many different ways.

## CAREER OPPORTUNITIES

A Level English Literature will provide you with a good basis for all professions and careers, particularly those involving people and communications. Having a good command of English and a clear written style is essential for all careers and is particularly relevant for those of you wishing to study law, business, journalism courses and media/communications courses. The analytical content of the course is particularly useful for law students. The course is particularly suited for those of you who wish to study English Literature at a higher level as English departments at universities require their students to have a wide knowledge of English literature. Those wishing to study other subjects at university will find that English Literature will provide a useful choice if the subject you wish to study is not available at A Level.



# A LEVEL ENGLISH LITERATURE

## CAREER OPPORTUNITIES

English Literature is highly valued by employers because it develops the following transferable skills, which are so crucial for advancement in the modern workplace:

- » The ability to communicate clearly, both in speech and writing.
- » The ability to present and organise information, ideas and arguments in a coherent, incisive and logical way.

The ability to read texts with comprehension, enjoyment and discernment and to articulate informed and independent opinions and support them with apt evidence.

## A Level Content

### CORE CONTENT

- » Love through the ages
- » Texts in shared contexts
- » Independent critical study: texts across time

## A Level Assessment

### PAPER 1: LOVE THROUGH THE AGES

- Written paper 40%
- 3 tasks
- 3 hours
- Clean open book

### PAPER 2: TEXTS IN SHARED CONTEXTS

- Written paper 40%
- 3 tasks
- 2.5 hours
- Clean open book

### NON-EXAM: INDEPENDENT CRITICAL STUDY: TEXTS ACROSS TIME 20%

Comparative critical study of two texts, at least one of which must have been written pre-1900. One extended essay (2500 words) and a bibliography.



# A LEVEL FRENCH



**CONTACT:**  
Miss E Lynch

**EMAIL:**  
[eimear.lynch@gatewaysschool.co.uk](mailto:eimear.lynch@gatewaysschool.co.uk)

**EXAMINATION BOARD:**  
AQA

**SPECIFICATION:**  
7652

## Preferred Previous Studies

Minimum of grade 6 in GCSE French.

## WHY STUDY FRENCH?

Studying a foreign language at A Level enables you to build on the language skills you have developed at GCSE, exploring topics which will be genuinely interesting and will inspire you to express your own opinions. A foreign language provides opportunities to spend time in the country with families or on work experience. As well as expanding your knowledge of the structure of the language, you will also gain a deeper insight into the countries where the language is spoken, exploring aspects of society and culture. Foreign language skills give you an advantage over other candidates for jobs, including law and business, as well as university places. A language combines well with any subject and opens doors to a wide choice of career paths.

If you choose to study a foreign language at Gateways, you will take part in a great variety of motivating and creative learning activities, including debates, the use of songs, films and ICT. The department has designated laptops and we use the Sanako Language Laboratory system which will allow you to record yourself and for your teacher to insert feedback

into the recording as well as undertake independent listening, reading and grammar activities. There is a high staff-to-student ratio, which permits frequent opportunities for individual oral practice in preparation for speaking tests. The department enjoys the benefit of regular contact with AQA examiners to discuss with you what exactly is required for success in your examinations.

## CAREER OPPORTUNITIES

Knowledge of a foreign language at A Level can lead to further study of the language itself, or it can be the crucial extra string to your bow that gives you an advantage over other candidates for jobs and university places. Advanced knowledge of another language will also provide you with the opportunity to work abroad or join an international company.



## A Level Content

The A Level consists of three papers:

## PAPER 1: 'Listening, Reading, Writing'

## PAPER 2: 'Writing'

## PAPER 3: 'Speaking Test'

These are the topics you will study:

- » The changing nature of the family
- » The" cyber" society
- » The place of voluntary work
- » A culture proud of its heritage
- » Contemporary francophone music
- » Cinema: the 7th art form
- » Positive features of a diverse society
- » Life for the marginalised
- » How criminals are treated
- » Teenagers, the right to vote and political commitment
- » Demonstrations, strikes – who holds the power?
- » Politics and immigration



Also: one film and one literary text or two literary texts.

## A Level Assessment

## LISTENING, READING AND WRITING

- Written exam: 2 hours 30 minutes
- 100 marks in total
- 50% of A Level

## WRITING

- Written exam: 2 hours
- 80 marks in total
- 20% of A Level

## SPEAKING

- Oral exam: 21–23 minutes (including 5 minutes preparation time)
- 60 marks in total
- 30% of A Level

# A LEVEL FURTHER MATHEMATICS



**CONTACT:**  
Mr C Adegboro

**EMAIL:**  
charles.adegboro@gatewaysschool.co.uk

**EXAMINATION BOARD:**  
Edexcel

**SPECIFICATION:**  
9FM0

## Preferred Previous Studies

Higher GCSE Mathematics or equivalent at grade 7 or above.

## WHY STUDY FURTHER MATHEMATICS?

Further Mathematics at A Level will put you in an excellent position if you wish to study Mathematics or a subject with a very high mathematical content at university, (e.g., Engineering, Physics, Mathematics, Computing, Statistics, Actuary Science etc.). Some Russell group universities insist that students wishing to apply for these courses study Further Mathematics at A Level. The course is designed to broaden and deepen the mathematical knowledge and skills developed when studying A Level Mathematics. It provides the opportunity to study aspects of the pure and applied strands of mathematics to a greater depth. For example, the pure mathematics met at A Level is extended to cover topics such as complex numbers, matrices, further algebra and functions, further calculus, further vectors, polar coordinates, hyperbolic functions and differential equations.

Further Mathematics may be studied alongside or after taking A Level Mathematics and provides a stimulating experience for those who enjoy the subject. After successful completion of the course, student will achieve A Level qualifications in both Mathematics and Further Mathematics (i.e. two separate A Level subjects). This implies that the time commitment to Mathematics during the

course is doubled so it is essential that students wishing to study Further Mathematics really do enjoy and are good at Maths. At Gateways, the opportunity to study AS Further Mathematics is also provided for students. A Level Further Mathematics is studied in Lower 6 and Upper 6 and students commit to both Mathematics and Further Mathematics at the beginning of the Lower 6.

## CAREER OPPORTUNITIES

An A Level in Mathematics and Further Mathematics can lead to courses and careers in engineering, computing, economics, geography, architecture, electronics, accounting, finance, business and all sciences including medicine. It can also be combined with any other A Level subjects for careers that require creative thinking and application of logic. Mathematics is a high prestige subject and underpins much of the knowledge base of our advanced society including areas as diverse as urban planning or telecommunications.



# A LEVEL FURTHER MATHEMATICS

## AS Level Content

AS Further Mathematics is a stand-alone qualification. AS Further Mathematics contents contain a proportion of optional content defined by the exam board.

### PURE MATHEMATICS 1:

- » Proof
- » Complex numbers
- » Matrices
- » Further algebra and functions
- » Further calculus
- » Further vectors

### OPTIONS:

Two units will be offered from the following:

- » Further Pure Mathematics 1
- » Further Statistics 1
- » Further Mechanics 1
- » Decision Mathematics 1
- » Decision Mathematics 2

## A Level Content

A Level Further Mathematics contents contain a proportion of optional content defined by Edexcel.

### PURE MATHEMATICS 1:

- » Proof
- » Complex numbers
- » Matrices, Further algebra and functions
- » Further calculus
- » Further vectors
- » Polar coordinates
- » Hyperbolic functions
- » Differential equations

### MATHEMATICS 2:

- » Complex numbers
- » Further algebra and functions
- » Further calculus
- » Polar coordinates
- » Hyperbolic functions
- » Differential equations

### FURTHER MATHEMATICS OPTION 1:

You take one of the following options:

- » Further Pure Mathematics 1
- » Further Statistics 1
- » Further Mechanics 1
- » Decision Mathematics 1

### FURTHER MATHEMATICS OPTION 2:

You take one of the following options:

- » Further Pure Mathematics 2
- » Further Statistics 1
- » Further Statistics 2
- » Further Mechanics 1
- » Further Mechanics 2
- » Decision Mathematics 1
- » Decision Mathematics 2

## AS Level Assessment

### PAPER 1 - PURE MATHEMATICS 1

- 1 hour 40 minutes (calculator) 80 marks

### PAPER 2 - OPTIONS

- 1 hour 40 minutes (calculator) 80 marks

## A Level Assessment

### PAPER 1 - CORE PURE MATHEMATICS 1

### PAPER 2 - CORE PURE MATHEMATICS 2

### PAPER 3 - OPTION 1

### PAPER 4 - OPTION 2

All examination papers are 1 hour 30 minutes and allow the use of a graphics calculator. Each written papers are worth 75 marks each and attribute 25% of the overall mark.



# A LEVEL GEOGRAPHY



**CONTACT:**  
Mrs E Hayward

**EMAIL:**  
[elizabeth.hayward@gatewaysschool.co.uk](mailto:elizabeth.hayward@gatewaysschool.co.uk)

**EXAMINATION BOARD:**  
AQA

**SPECIFICATION:**  
7037

## Preferred Previous Studies

Whilst it is possible to study A Level Geography without having a GCSE within the subject, it is preferable that students have already attained a GCSE in Geography of grade 6 or above.

## WHY STUDY GEOGRAPHY?

Geography is an incredibly relevant subject with politicians increasingly concerned with a number of areas such as climate change, migration, environmental degradation, land use planning, ageing populations and health.

The subject allows you to understand the interrelationships between people and their environments by engaging in a range of both physical and human topics whilst at the same time, encompassing a wide range of transferable skills.

Such skills are highly admired by Russell Group universities who have defined geography as one of the key “facilitating” subjects, allowing students to access a range of university courses and careers.

## CAREER OPPORTUNITIES

In terms of careers, geography has one of the best graduate employment records in the country. Many graduates enter management with companies such as Unilever, Nissan and BP; some become accountants, bankers, computer programmers or research assistants whilst others specialise in particular areas of geography by completing an MSc or PhD. The excellent employment record which geography graduates have is a sign of the flexibility and professionalism which a geography degree develops.



# A LEVEL GEOGRAPHY

## A Level Content

### UNIT 1: PHYSICAL GEOGRAPHY

- » Water and carbon cycles
- » Hot desert systems and landscapes
- » Hazards

### UNIT 2: HUMAN GEOGRAPHY

- » Global systems and global governance
- » Changing places
- » Urban environments

### UNIT 3: GEOGRAPHICAL INVESTIGATION

- » Coursework

## A Level Assessment

- Three written papers
- At A Level, the course is assessed by two examinations (each worth 40% and lasting 2.5 hours) with the remaining 20% being coursework based upon a piece of fieldwork.
- Each examination paper comprises a mixture of short answer, levels of response and extended writing questions.

Fieldwork is an important aspect of the course and this will be completed in the local area with further opportunity for an overseas residential, currently to Iceland.

# A LEVEL GERMAN



**CONTACT:**  
Mrs L Brown

**EMAIL:**  
louise.brown@gatewaysschool.co.uk

**EXAMINATION BOARD:**  
AQA

**SPECIFICATION:**  
7662

## Preferred Previous Studies

Minimum of grade 6 in German.

## WHY STUDY GERMAN?

Studying a foreign language at A Level enables you to build on the language skills you have developed at GCSE, exploring topics which will be genuinely interesting and will inspire you to express your own opinions. A foreign language provides opportunities to spend time in the country with families or on work experience. As well as expanding your knowledge of the structure of the language, you will also gain a deeper insight into the countries where the language is spoken, exploring aspects of society and culture. Foreign language skills give you an advantage over other candidates for jobs, including law and business, as well as university places. A language combines well with any subject and opens doors to a wide choice of career paths.

If you choose to study a foreign language at Gateways, you will take part in a great variety of motivating and creative learning activities, including debates, the use of songs, films and ICT. The department has designated laptops and we use the Sanako language laboratory system which will allow you to record yourself and for your teacher to insert feedback into the recording as well as undertake independent listening, reading and grammar activities. There is a high staff-to-student ratio, which permits

frequent opportunities for individual oral practice in preparation for speaking tests. The department enjoys the benefit of regular contact with AQA examiners to discuss with you what exactly is required for success in your examinations.

## CAREER OPPORTUNITIES

Knowledge of a foreign language at A Level can lead to further study of the language itself, or it can be the crucial extra string to your bow that gives you an advantage over other candidates for jobs and university places.

Advanced knowledge of another language will also provide you with the opportunity to work abroad or join an international company.





## A Level Content

The A Level consists of three papers:

**PAPER 1:** Listening, Reading, Writing

**PAPER 2:** Writing

**PAPER 3:** Speaking Test

Topics covered in Year 1 include

- » The changing state of the family
- » The digital world
- » Youth culture: fashion, trends, music, television
- » Festivals and traditions
- » Art and architecture
- » Cultural life in Berlin, past and present

Also: one literary text or one film

Topics covered in Year 2 include

- » Immigration
- » Integration
- » Racism
- » Germany and the European Union
- » Politics and youth
- » German re-unification and its consequences

Also: one film and one literary text or two literary texts

## A Level Assessment

### LISTENING, READING AND WRITING

- Written exam: 2 hours 30 minutes
- 100 marks in total
- 50% of A Level

### WRITING

- Written exam: 2 hours
- 80 marks in total
- 20% of A Level

### SPEAKING

- Oral exam: 21–23 minutes (including 5 minutes' preparation time)
- 60 marks in total
- 30% of A Level



# A LEVEL HISTORY



**CONTACT:**  
Mrs J Watson

**EMAIL:**  
[joanna.watson@gatewaysschool.co.uk](mailto:joanna.watson@gatewaysschool.co.uk)

**EXAMINATION BOARD:**  
AQA

**SPECIFICATION:**  
7042

## Preferred Previous Studies

It is preferable for students to have studied History at GCSE and achieved a grade 6 or above.

## WHY STUDY HISTORY?

How else can you make sense of the present unless you have a good understanding of the past? How else are you going to change the world if you haven't looked at how it got in the state it's in already?

History is about people - real people whose lives were sometimes exciting and sometimes frightening. Whatever their lives were about, there are often fascinating and sometimes tragic stories behind them-you will discover some of these on the A Level course. Apart from being interesting, history will give you knowledge and skills which will prepare you for higher education and which will be useful in any career. History is very highly regarded by universities as an entry subject.

Studying history helps you to understand the significance of historical events, the role of individuals in history and the nature of change over time. This qualification will help you to gain a deeper understanding of the past through political, social, economic and cultural perspectives. The engaging

topics available throughout the course will provide you with the knowledge and skills required to succeed A Level historians.

## CAREER OPPORTUNITIES

History students have strong analytical and communication skills which can be put to good use in careers in business, finance, HR and law. Other careers chosen by historians include writing or broadcasting careers, which provide opportunities for historians to share their expertise with wider audiences and readerships. Museums, galleries, libraries and other historical archives also offer opportunities to pursue history careers in archiving and heritage. Additionally, after politics, history is the most popular degree choice amongst current UK MPs!



# A LEVEL HISTORY

## A Level Content

### COMPONENT 1: THE ENGLISH REVOLUTION, 1625-1660

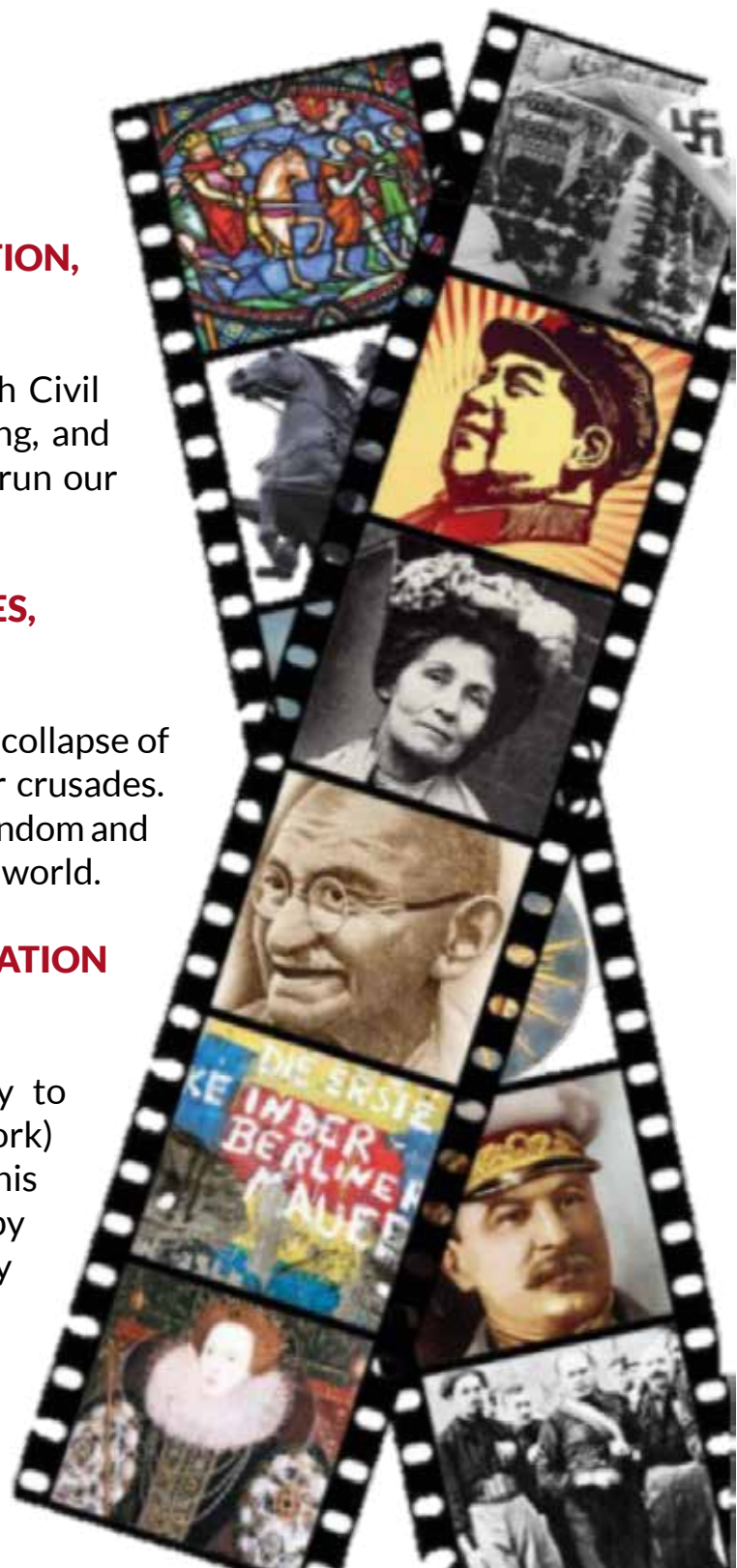
The course explores the causes of the English Civil War, the reasons for the execution of the King, and the reasons why the only English attempt to run our country as a Republic was a complete failure.

### COMPONENT 2: THE AGE OF THE CRUSADES, 1071 - 1204

This looks at the Muslim counter-crusade, the collapse of the crusader states and the unsuccessful later crusades. We will explore the political disunity of Christendom and the unifying influence of Saladin in the Muslim world.

### COMPONENT 3: HISTORICAL INVESTIGATION (NON-EXAM ASSESSMENT)

The A Level gives students the opportunity to complete a historical investigation (coursework) on a topic set within the context of 100 years. This is an exciting piece of research that is guided by the teacher, and allows the students to study any area of history that they are interested in.



## A Level Assessment

### EXAMINATION PAPERS

- Two written exams: 2½ hour
- Three questions (one compulsory)
- 80% of A Level

### HISTORICAL INVESTIGATION

- 4000-4500 words
  - 20% of A Level
- Marked by teachers and moderated by AQA

# BTEC INFORMATION TECHNOLOGY



**CONTACT:**  
Mrs A Holmes

**EMAIL:**  
alex.holmes@gatewaysschool.co.uk

**EXAMINATION BOARD:**  
Pearson

**SPECIFICATION:**  
BTEC Level 3 Nationals Extended Certificate in Information  
Technology (360 GLH) 601/7575/8

## Preferred Previous Studies

A GCSE in Computer Science would be preferential as a lot of the fundamental knowledge would help significantly in the unit 1 content, however, having a general interest in the subject is key.

### WHY STUDY IT?

Every business in the world is heavily reliant on an up-to-date IT system. Computers are the future and having a keen interest and the ability to use and understand computers and IT systems is key. This course provides a good basis and understanding to the subject of IT and how it can be used as well as giving a good basis for those intending to study IT and business-related subjects at university level.

BTECs are designed as specialist work-related qualifications and are available in a range of sectors to provide a more hands on experience of a subject rather than focusing solely on the theory of a subject.

This course would be a good alternative to the A Level Computer Science if a student enjoys the subject but does not wish to pursue a programming focus. Students will develop a strong understanding of how businesses use IT to support themselves and how the function of a business is helped using IT.

### CAREER OPPORTUNITIES

Studying Information Technology can lead to careers in:

- » IT
- » Data Analysis
- » Networking
- » Data Administration
- » Programming
- » Website Development

BTEC L3 EXTENDED CERTIFICATE	A LEVEL	UCAS TARIFF POINTS
D*	A*	56
D	A	48
M	C	32



## Course Content

### Exam – Unit 1 - Information Technology Systems

Students will study the role of Information Technology (IT) systems and the implications of their use in personal and professional situations. Students will gain knowledge and understanding of issues relating to the use of IT in personal and professional situations.

Information technology (IT) systems have a significant role in the world around us and play a part in almost everything we do. Having a sound understanding of how to effectively select and use appropriate IT systems will benefit you personally and professionally.

### Exam – Unit 2 - Creating Systems to Manage Information (Databases)

This unit covers the design, creation, testing and evaluation of a relational database system to manage information. In order to produce information to support many business processes as well as our social lives, relational databases are widely used to manage and process data. From the smallest in-house systems to stock control systems for large online retailers, databases are repositories of information that are a significant part of organisational operating requirements.

### Non-examination assessment – Unit 3 - Using Social Media in Business

Social media websites are a popular way for people to communicate and share information with friends and family. People spend a lot of time on social media websites and they give businesses opportunities to interact with people, for example to promote their business, to encourage people to visit their e-commerce site and buy, to provide customer service. You may be familiar with social media for personal use and in this unit you will discover how it can be used in a business context. Students implement social media activities in a business to meet requirements. Unit 3 is a coursework element of the qualification.

### Optional Unit

One optional NEA will be studied from the following topics:

- Data Modelling
- Website Development
- Mobile Apps Development
- Computer Games Development

## Course Assessment

The course is a combination of external exams (58%) as well as internally assessed coursework (42%).

### UNIT 1 – EXAM

- Information Technology Systems, 2 hours, 33% of qualification

### UNIT 2

- Creating Systems to Manage Information (Databases), 5 hours (over 2 days in 3 and 2 hour splits), 25% of qualification.

In addition, there is a coursework element which is worth 42% of the qualification.



# A LEVEL MATHEMATICS



**CONTACT:**  
Mr C Adegboro

**EMAIL:**  
charles.adegboro@gatewaysschool.co.uk

**EXAMINATION BOARD:**  
Edexcel

**SPECIFICATION:**  
9MA0

## Preferred Previous Studies

Higher GCSE Mathematics or equivalent at grade 7 or above.

## WHY STUDY MATHEMATICS?

The mathematics studied at A Level will extend the range of mathematical skills and techniques you learned at GCSE. You will develop an understanding of mathematical processes, progression and coherence and how different areas of mathematics can be connected.

The logic and reasoning skills developed by studying A Level Mathematics makes it a widely respected qualification even in non-mathematical fields. A Level Mathematics will help you understand how real-world problems can be studied using mathematical models.

You will gain in confidence and be encouraged to develop an awareness of the use of mathematics in other fields of study, the world of work and society in general.

## CAREER OPPORTUNITIES

A Level Mathematics can lead to courses and careers in Engineering, Computing, Economics, Geography, Architecture, Electronics, Accounting, Finance, Business and all Sciences including Medicine. It can also be combined with any other A Level subjects for careers that require creative thinking and application of logic. Mathematics is a high prestige subject and underpins much of the knowledge base of our advanced society including areas as diverse as urban planning or telecommunications.



# A LEVEL MATHEMATICS

## A Level Content

A Level Maths content is 100% prescribed. Three branches of mathematics are studied and assessed: Pure Mathematics, Mechanics and Statistics.

### **PURE MATHEMATICS UNIT:**

Proof, algebra and functions, coordinate geometry, sequences and series, trigonometry, exponentials and logarithms, differentiation, integration, numerical methods.

### **STATISTICS:**

Statistical sampling, data presentation and interpretation, probability, statistical distributions, statistical hypothesis testing.

### **MECHANICS:**

Vectors, quantities and units in mechanics, kinematics, forces, Newton's laws and moments.

## A Level Assessment

A Level Mathematics consists of three externally examined papers and students must complete all assessment in May/June in any single year.

### **PAPER 1 – PURE MATHEMATICS 1 (33.33% OF THE QUALIFICATION)**

- Written examination: 2 hours (calculator) 100 marks

### **PAPER 2 – PURE MATHEMATICS 2 (33.33% OF THE QUALIFICATION)**

- Written examination: 2 hours (calculator) 100 marks

### **PAPER 3 – APPLIED MATHEMATICS (33.33% OF THE QUALIFICATION)**

- Written examination: 2 hours (calculator) 100 marks

The assessment comprises two sections:

- Section A – Statistics (50 marks)
- Section B – Mechanics (50 marks)



*Musical talent is always on show at our annual House Music Competition which is one of our most popular events.*

# A LEVEL MUSIC



**CONTACT:**  
Mr I Lenihan

**EMAIL:**  
ian.lenihan@gatewaysschool.co.uk

**EXAMINATION BOARD:**  
AQA

**SPECIFICATION:**  
7272

## Preferred Previous Studies

Pupils taking the A Level music course need not to have studied GCSE Music although it is considered desirable. Pupils should, however, be at a standard of Grade 5/6 in a practical instrumental study or in singing before commencing the course.

## WHY STUDY MUSIC?

Music is as integral to everyday life as books, language, science and numbers. The study of music can take you to levels of greater understanding and enjoyment of 'Your kind of music', can complement other academic studies, or form a solid academic base if you wish to major in music of any sort. Music at A Level combines with every subject and it will not prevent you from any career path since the skills required in performance and ensemble music making are widely recognized as indicators of good independent learning ability. During the course you will broaden your knowledge of music styles, develop compositional skills, acquire a wider understanding of harmony, practice critical listening, musical analysis and written techniques, acquire study and research skills, and prepare performances.

The A Level Music specification enables you to extend your knowledge and understanding of music, to create and develop your own musical ideas and to demonstrate technical, interpretative and communication skills through performing music. This 3-unit course will help you to develop aural, theoretical and analytical skills and enables you to explore set works within

varied areas of study, providing a broad historical musical perspective.

You can choose to study compositional techniques, to create music which draws on your own experience and enthusiasm or to arrange a given piece of music. In performances, you have the opportunity to present solo and ensemble pieces.

## CAREER OPPORTUNITIES

A music qualification at A Level can lead to a wide choice of further education. Most universities have thriving music departments, with courses geared to both academic and performance-related work. In addition, there are now many specialist music colleges in Britain catering for both academic students and those who wish to take up music as a professional performer.





## A Level Content

### **COMPONENT 1: PERFORMANCE (35% OF THE A LEVEL)**

- » A performance of one or more pieces, performed as a recital.
- » Performance can be playing or singing solo, in an ensemble, improvising, or realising music using music technology.
- » The total performance time across all pieces must be a minimum of 10 minutes.
- » Performances must be recorded after 1 March in the year of certification and all materials for assessment submitted to arrive by 15 May in the year of certification.

### **COMPONENT 2: COMPOSITION (25% OF THE A LEVEL)**

- » Total of two compositions, one to a brief set by AQA and one either free composition.
- » Total time across both submissions must be a minimum of 4 ½ minutes

### **COMPONENT 3: APPRAISING MUSIC (40% OF THE A LEVEL)**

One written paper of 2 hours and 30 minutes

The areas of study provide an appropriate focus for students to appraise, develop and demonstrate an in-depth knowledge and understanding of musical elements, musical contexts and musical language. The areas of study can also provide a rich source of material for your students to work with when developing performance and composition skills.

Students must study area of study 1: Western classical tradition 1650–1910 and choose two from areas of study 2–7.

There are seven areas of study:

1. Western classical tradition 1650–1910 (compulsory)
2. Pop music
3. Music for media
4. Music for theatre
5. Jazz
6. Contemporary traditional music
7. Art music since 1910.



## LEVEL 3 PHILOSOPHY





# A LEVEL PHILOSOPHY



**CONTACT:**  
Mr D Reeves

**EMAIL:**  
daniel.reeves@gatewaysschool.co.uk

**EXAMINATION BOARD:**  
AQA

**SPECIFICATION:**  
7172

## Preferred Previous Studies

You do not need to have studied any particular subjects but since it is an essay subject, a grade 6 or above in GCSE English Language would be preferred.

## WHY STUDY PHILOSOPHY?

Socrates wrote: “The unexamined life is not worth living” and philosophy is the study of the fundamental nature of life, knowledge, reality, and existence. Philosophy is not much a subject as an activity that people undertake when they seek to understand themselves, the world they live in, and the relations to the world and each other. Those who study philosophy are engaged in asking, answering, evaluating, and reasoning about some of life’s most essential, meaningful, and difficult questions. In studying philosophy, you’ll have a chance to grapple with these questions yourself and to think about what others, some of the greatest philosophers of the past and present, think about them.

Far from being an abstract and useless field, philosophy is among the most practical courses of study. Taking philosophy imparts skills that will be useful, not only in any career, but also in your personal life. The study of philosophy will enable you to think carefully, critically, and with clarity, take a logical approach to addressing challenging questions and examining hard issues, reason well and evaluate the reasoning of others, discuss sensibly, and write effectively.

## CAREER OPPORTUNITIES

Philosophy is an invaluable subject for a wide range of careers. The Guardian has reported that Philosophy graduates are now in high demand. Lucy Adams, human resources director of Serco, a services business and a consultancy firm, says: *“Philosophy lies at the heart of our approach to recruiting and developing our leadership, and our leaders. We need people who have the ability to look for different approaches and take an open mind to issues. These skills are promoted by philosophical approaches.”*

Deborah Bowman, associate dean for Medicine and Health Sciences courses at University of London says, philosophers are increasingly sought after by the NHS: *“Graduates of philosophy who come in to graduate-entry medicine, or to nursing courses, are very useful. Growth areas in the NHS include clinical ethicists, who assist doctors and nurses. Medical ethics committees and ethics training courses for staff are also growing. More and more people are needed to comment on moral issues in healthcare, such as abortion.”*



# A LEVEL PHILOSOPHY

## A Level Content

Over the two year course you will study four different areas of philosophy in which you will be required to demonstrate understanding and an ability to make reasoned critical evaluation of a variety of responses to the questions that are posed below:

### EPISTEMOLOGY

- » What is knowledge?
- » Is perception a reliable source of knowledge?
- » Is reason a reliable source of knowledge?
- » What are the limits of our knowledge?

### MORAL PHILOSOPHY

- » What do we mean by 'good'?
- » How can we decide what the 'good' thing to do is?
- » Is it moral to eat meat?
- » Is stealing ever morally acceptable?
- » Is lying always wrong?
- » Is it immoral to play video games that involve killing?

### METAPHYSICS OF GOD

- » What do we mean by 'God'?
- » Can we speak meaningfully about God?
- » Are there good reasons to believe God exists?
- » Why would a loving God allow suffering?

### METAPHYSICS OF MIND

- » Is our mind distinct from our brain?
- » What is the nature of consciousness?
- » Can computers think?
- » Can we have free will in a materialist world?

## A Level Assessment

The A Level is examined in two written papers. Each paper is three hours in length and worth 50% of the overall grade.



# A LEVEL PHYSICS



**CONTACT:**  
Mrs K Ashurst

**EMAIL:**  
[kim.ashurst@gatewaysschool.co.uk](mailto:kim.ashurst@gatewaysschool.co.uk)

**EXAMINATION BOARD:**  
AQA

**SPECIFICATION:**  
7408

## Preferred Previous Studies

GCSE Physics grade 6 or above or Double Award Science grade 7 or above. GCSE Mathematics grade 6 or above.

## WHY STUDY PHYSICS?

Physics is an ever-developing subject that encourages you to develop your knowledge and understanding of the physical world and how it can be applied to novel situations. Not only is it the answer to life, the universe and everything in it, Physics qualifications will allow you to apply for a wide variety of university courses. The technology developed from its principles makes modern life what it is: from the seats you are sitting on, the music you hear, the television you watch, the clothes you wear and the energy that makes all of these things possible.

Physics is fundamentally an experimental subject. This specification provides numerous opportunities to use practical experiences to link theory to reality, and equip you with the essential practical skills you need. A wide range of resources from textbooks through data logging apparatus to specialised equipment will sustain and develop your curiosity and provide you with the opportunity to achieve your best possible results.

## CAREER OPPORTUNITIES

An A Level in Physics is essential, highly desirable or very useful for many different careers. The analytical approach developed through the course will equip you with the skills necessary for a wide range of courses and careers from engineering, medicine, radiography, veterinary science, dentistry, architecture, management, research through geophysics and geology.



## A Level Content

### YEAR 1

- » Measurements and their errors
- » Particles and radiation
- » Waves
- » Mechanics and materials
- » Electricity

You are introduced both to the fundamental properties of matter, and to electromagnetic radiation and quantum phenomena. You will appreciate the importance of international collaboration in the development of new experiments and theories in this area of fundamental research.

GCSE studies of wave phenomena, elasticity, forces and electricity are further extended.

### YEAR 2

- » Further mechanics and thermal physics
- » Fields and their consequences
- » Nuclear physics
- » An option from astrophysics, medical physics, engineering physics, turning points in physics or electronics

The earlier study of mechanics is further advanced through a consideration of circular motion and simple harmonic motion (the harmonic oscillator).

A further section allows the thermal properties of materials, the properties and nature of ideal gases, and the molecular kinetic theory to be studied in depth.

The concept of field is one of the great unifying ideas in physics. The ideas of gravitation, electrostatics and magnetic field theory are developed to emphasise this unification. Many ideas from mechanics and electricity from earlier in the course support this and are further developed.

Practical applications considered include: planetary and satellite orbits, capacitance and capacitors, their charge and discharge through resistors, and electromagnetic induction. These topics have considerable impact on modern society.

Earlier work of particles and radiation is built upon to link the properties of the nucleus to the production of nuclear power through the characteristics of the nucleus, the properties of unstable nuclei, and the link between energy and mass. You should become aware of the physics that underpins nuclear energy production and also of the impact that it can have on society.

## A Level Assessment

### PAPER 1

- 2 hours, Year 1 content plus Periodic Motion.

### PAPER 2

- 2 hours, Thermal Physics, Fields and their consequences, Nuclear physics.

### PAPER 3

- 2 hours, assessing the option topic and will also test practical skills and data analysis.

# A LEVEL POLITICS



**CONTACT:**  
Mrs J Watson

**EMAIL:**  
joanna.watson@gatewaysschool.co.uk

**EXAMINATION BOARD:**  
AQA

**SPECIFICATION:**  
7152

## Preferred Previous Studies

A grade 6 or above in GCSE English Language is preferred.

## WHY STUDY POLITICS?

Lively, relevant, controversial... there are many ways to describe A Level Politics. There's no denying that it's one of the most interesting and engaging qualifications you can choose. If you want to study an A Level that is totally up-to-date, then this is a good course for you. If you hear about a political event on the radio in the morning, then it will be relevant to this A Level.

Covering news and current affairs from the UK and US, it helps you understand how the UK country is run and develops research, written communication and debate skills. It also helps grow your confidence.

## CAREER OPPORTUNITIES

Whilst 20% of current MPs studied a Politics degree, there are many other career opportunities supported by Politics A Level. It's ideal if you're considering studying law, politics, sociology, advertising or journalism at university and is highly regarded by employers in industries including international organisations, the media, government and the civil service.





# A LEVEL POLITICS

## A Level Content

### COMPONENT 1: GOVERNMENT AND POLITICS OF THE UK

Government and politics of the UK is divided into ten sections. Each has a particular focus but their interrelationships must be understood to appreciate the complexities of the system. Sections include the role of Parliament, the cabinet and the Prime Minister and the impact of the Supreme Court: this makes the topic ideal for students considering a career in law. We also study reasons for voting behaviour and what the current UK political parties actually stand for.

### COMPONENT 2: GOVERNMENT AND POLITICS OF THE USA

This is a comparative paper. You will learn about government and politics of the USA and then compare this to UK politics. We focus on key, current issues, such as gun ownership in the USA.

### COMPONENT 3: POLITICAL IDEAS

This section covers the study of the core ideologies including liberalism, conservatism, socialism and other ideologies including nationalism, feminism and multiculturalism.

## A Level Assessment

### PAPER 1: GOVERNMENT AND POLITICS IN THE UK

- 2 hours: 77 marks equivalent to 1/3 of the overall grade.

### PAPER 2: THE GOVERNMENT AND POLITICS OF THE USA COMPARATIVE GOVERNMENT

- 2 hours: 77 marks equivalent to 1/3 of the overall grade.

### PAPER 3: POLITICAL IDEAS

- 2 hours: 77 marks equivalent to 1/3 of the overall grade.





## A LEVEL PSYCHOLOGY



# A LEVEL PSYCHOLOGY



**CONTACT:**  
Mrs E Hayward

**EMAIL:**  
[elizabeth.hayward@gatewaysschool.co.uk](mailto:elizabeth.hayward@gatewaysschool.co.uk)

**EXAMINATION BOARD:**  
AQA

**SPECIFICATION:**  
7182

## Preferred Previous Studies

A Level Psychology can be studied without having previously obtained a GCSE within the subject. Given the level of statistics required, however, the course requires that you attain a minimum of a GCSE grade 5 in both mathematics and science.

## WHY STUDY PSYCHOLOGY?

Psychology is an interesting subject which complements a range of science and arts A Levels. The course will enable you to explore human behaviour and understand the psychological theories and methodologies underpinning the subject. In so doing, you will begin to question what it is to be human and understand the links between the mind and body. The five key areas of psychology (cognitive, social, developmental, physiological and individual differences) are discussed throughout the course, providing you with the opportunity to develop your critical and evaluative skills. In addition, there will be opportunities to both interpret and conduct research which will allow you to question the actions and decisions that relate to our own everyday life.

The course is assessed purely by examination with no coursework or controlled assessments involved. The research techniques, communication, statistical and analytical skills developed throughout this course are valued by many universities and employers and therefore, this A Level provides access to a range of university courses and career opportunities.

## CAREER OPPORTUNITIES

Psychology is a subject that can be studied at university alongside a wide range of other disciplines, such as law, business, criminology, sociology, sport and many other science and arts courses.



# A LEVEL PSYCHOLOGY

## A Level Content

### PAPER 1: INTRODUCTORY TOPICS IN PSYCHOLOGY

- » Social influence
- » Memory
- » Attachment
- » Clinical psychology and mental health

### PAPER 2: PSYCHOLOGY IN CONTEXT

- » Approaches in psychology
- » Biopsychology
- » Research methods

### PAPER 3: ISSUES AND OPTIONS IN PSYCHOLOGY

- » Issues and debates in psychology
- » Gender
- » Schizophrenia
- » Forensic psychology



## A Level Assessment

- Three written papers
- 2 hours duration
- Equally weighted at 33.3% each
- A mixture of multiple choice, short answer and extended written responses.







# A LEVEL SOCIOLOGY



**CONTACT:**  
Ms H. Bromley

**EMAIL:**  
[helen.bromley@gatewaysschool.co.uk](mailto:helen.bromley@gatewaysschool.co.uk)

**EXAMINATION BOARD:**  
AQA

**SPECIFICATION:**  
7291

## Preferred Previous Studies

A grade 6 or above in GCSE English Language is preferred.

## WHY STUDY SOCIOLOGY?

Sociology is a stimulating and relevant subject, offering the opportunity to develop a range of transferable skills and a 'sociological imagination' for the purposes of studying how human society develops and changes and people interact with one another. It provides students with an understanding of how society can shape people and how people can shape society.

The central aims of the A Level course in Sociology are to examine relationships and inequalities between individuals and the effects that social, economic and political influences may have on them and to develop within students a critical understanding of society. This is achieved by examining of two core themes:

- » **Socialisation, Culture and Identity**
- » **Social Differentiation, Power and Stratification.**

## CAREER OPPORTUNITIES

An understanding of sociology is key for careers in politics and the media, such as journalism. As sociology focuses on understanding how society and the key institutions in society function, this subject can be perfect for roles in public services e.g. like the police, criminal justice, social workers, probation officers. sociology can also lead you onto civil servant and public sector roles such as teaching, law and social work.



# A LEVEL SOCIOLOGY

## A Level Content

### UNIT 1: EDUCATION WITH THEORY AND METHODS

**Section A:** Education - students will explore what is the role and purpose of education; the differing experiences of pupils, and how these shapes and affects their educational achievement and identity; how different minority groups experience education; how educational policies in the UK affect and shape education.

**Section B:** Methods in Context - students will also cover the ways in which different research methods are used by sociologists and the strengths and weaknesses of these methods in investigating education.

**Section C:** Theory and Methods - students will explore the different research methods, which sociologists use to investigate society; as well as explore key debates in sociology such as the influence of sociology on social policy, whether sociology is a science, and whether sociology should be value-free.

### UNIT 2: TOPICS IN SOCIOLOGY

**Section A:** one option from: Culture and Identity, Families and Households, Health and Work and Poverty and Welfare (this will be taught in Year 12). The chosen topic is: Families & Households.

**Section B:** one option from the following topics: Beliefs in Society, The Media, Global Development, Stratification and Differentiation (this will be taught in Year 13). The chosen topic is: The Media.

### UNIT 3: CRIME AND DEVIANCE WITH THEORY AND METHODS

**Section A:** Crime and Deviance - students will look at Crime and Deviance and will consider key topics such as: What are the theories of crime and deviance in relation to social control? Who is more likely to commit crime and why? How does the media influence the rate of crime? What are the demographic trends in the crime statistics?

**Section B:** Theory and Methods - students will build on the research methods they learnt in Year 12 and will consider the methodological strengths and weaknesses of using each method to research society. Students will also explore sociological perspectives and their view of society, including Marxism, Feminism, Functionalism, Interactionism and Postmodernism.

## A Level Assessment

Students will sit a total of 3 written examinations. Each paper will be 2 hours and worth 33.3% of the total A Level qualification.

**SPECIFICATION:**  
7652





# A LEVEL SPANISH

## A Level Content

The A Level consists of three papers:

**PAPER 1:** Listening, Reading, Writing

**PAPER 2:** Writing

**PAPER 3:** Speaking Test

Topics covered in Year 1 include

- » Modern and traditional values
- » Cyberspace
- » Equal rights
- » Modern day idols
- » Spanish regional identity
- » Cultural heritage or cultural landscape

Also: one literary text or one film

Topics covered in Year 2 include

- » Immigration
- » Racism
- » Integration
- » Today's youth, tomorrow's citizens
- » Monarchies, republics and dictatorships
- » Popular movements

Also: one film and one literary text or two literary texts

## A Level Assessment

### LISTENING, READING AND WRITING

- Written exam: 2 hours 30 minutes
- 100 marks in total
- 50% of A Level

### WRITING

- Written exam: 2 hours
- 80 marks in total
- 20% of A Level

### SPEAKING

- Oral exam: 21–23 minutes (including 5 minutes' preparation time)
- 60 marks in total
- 30% of A Level





# LEVEL 3 CAMBRIDGE TECHNICAL EXTENDED CERTIFICATE IN SPORT & PHYSICAL ACTIVITY



# LEVEL 3 CAMBRIDGE TECHNICAL EXTENDED CERTIFICATE IN SPORT



**CONTACT:**  
Mrs L Braithwaite

**EMAIL:**  
[laura.braithwaite@gatewaysschool.co.uk](mailto:laura.braithwaite@gatewaysschool.co.uk)

**EXAMINATION BOARD:**  
OCR

## Preferred Previous Studies

It is highly recommended that students achieve a grade 4 or above in GCSE English and Maths.

## WHY STUDY SPORT AND PHYSICAL ACTIVITY?

This course is OCR Level 3 Cambridge Technical and is a vocational course worth the equivalent of 1 A Level. It will allow Gateways students to specialise in sports coaching, leadership and organising events. This course will include extensive opportunities to coach, lead and organise events for younger students, opportunities to gain additional coaching qualifications and educational visits to participate and gain an insight into sport in the workplace.

## CAREER OPPORTUNITIES

This qualification will provide learners with the skills, knowledge and understanding to progress into employment in the sport, leisure or fitness industry. It can lead to Advanced Level apprenticeships in Coaching, Leisure Management and Exercise and Fitness progressing to job roles including Personal Trainer, Sports Coach and Leisure Centre Manager. It could also provide a route into Higher Education on a sport-related degree programme including Sport and Physical Education, Sport and Exercise Science or Sports Coaching and Development.





# LEVEL 3 CAMBRIDGE TECHNICAL EXTENDED CERTIFICATE IN SPORT & PHYSICAL ACTIVITY

## Extended Certificate (360 GLH\*)

### MANDATORY

- » **Unit 1 (90 GLH):** Body systems and the effects of physical activity (\*externally assessed unit)  
The skeletal, muscular, cardiovascular, respiratory and energy systems and how they respond to exercise.
- » **Unit 2 (90 GLH):** Sports coaching and activity leadership roles and responsibilities of sports leaders, coaching techniques and planning, leading and reviewing sports sessions.
- » **Unit 3 (60 GLH):** Sports organisation and development (\*externally assessed unit) UK Sport and governing bodies, levels of participation, target groups and sports development initiatives.

### OPTIONAL (NEED 120 GLH)

- » **Unit 5 (60 GLH):** Performance analysis in sport and exercise performance profiling, analysing sports performance using a range of methods and giving feedback.
- » **Unit 8 (60 GLH):** Organisation of sports events different types of sports events, event promotion and planning, delivering and reviewing sports events.
- » **Unit 10 (60 GLH):** Biomechanics and movement analysis.
- » **Unit 11 (30 GLH):** Physical activity for specific groups provision for specific groups, barriers to participation, exercise referral and planning sessions for specific groups. This unit includes will include a visit to a special educational needs school.
- » **Unit 12 (30 GLH):** Nutrition and diet for sport and exercise.
- » **Unit 17 (60 GLH):** Sports injuries and rehabilitation signs and symptoms of common sports injuries, minimising risk, treating sports injuries and rehabilitation programmes.
- » **Unit 19 (60 GLH):** Sport and exercise psychology motivation, stress, group dynamics in team sports and the effect of exercise on mental health and wellbeing.
- » **Unit 20 (60 GLH):** Sport and exercise sociology (60 GLH).

## Assessment

The OCR Level 3 Cambridge Technical Extended Certificate in Sport and Physical Activity is worth the equivalent of 1 A Level and specialises in Coaching, Leadership and Physical Education. Qualifications are graded from Pass to Distinction\* level.

42% external assessment via written examinations for Units 1 and 3. These examinations are set and marked by OCR.

58% internal assessment via assignments e.g. written reports, practical demonstrations, PowerPoint presentations. These are assessed by course tutors and externally moderated by OCR.



# GATEWAYS

SCHOOL

**Growth** ♦ **Wellbeing** ♦ **Success**



Gateways School, Harewood, Leeds, West Yorkshire, LS17 9LE



[www.gatewaysschool.co.uk](http://www.gatewaysschool.co.uk)



[info@gatewaysschool.co.uk](mailto:info@gatewaysschool.co.uk)



+44 (0)113 288 6345